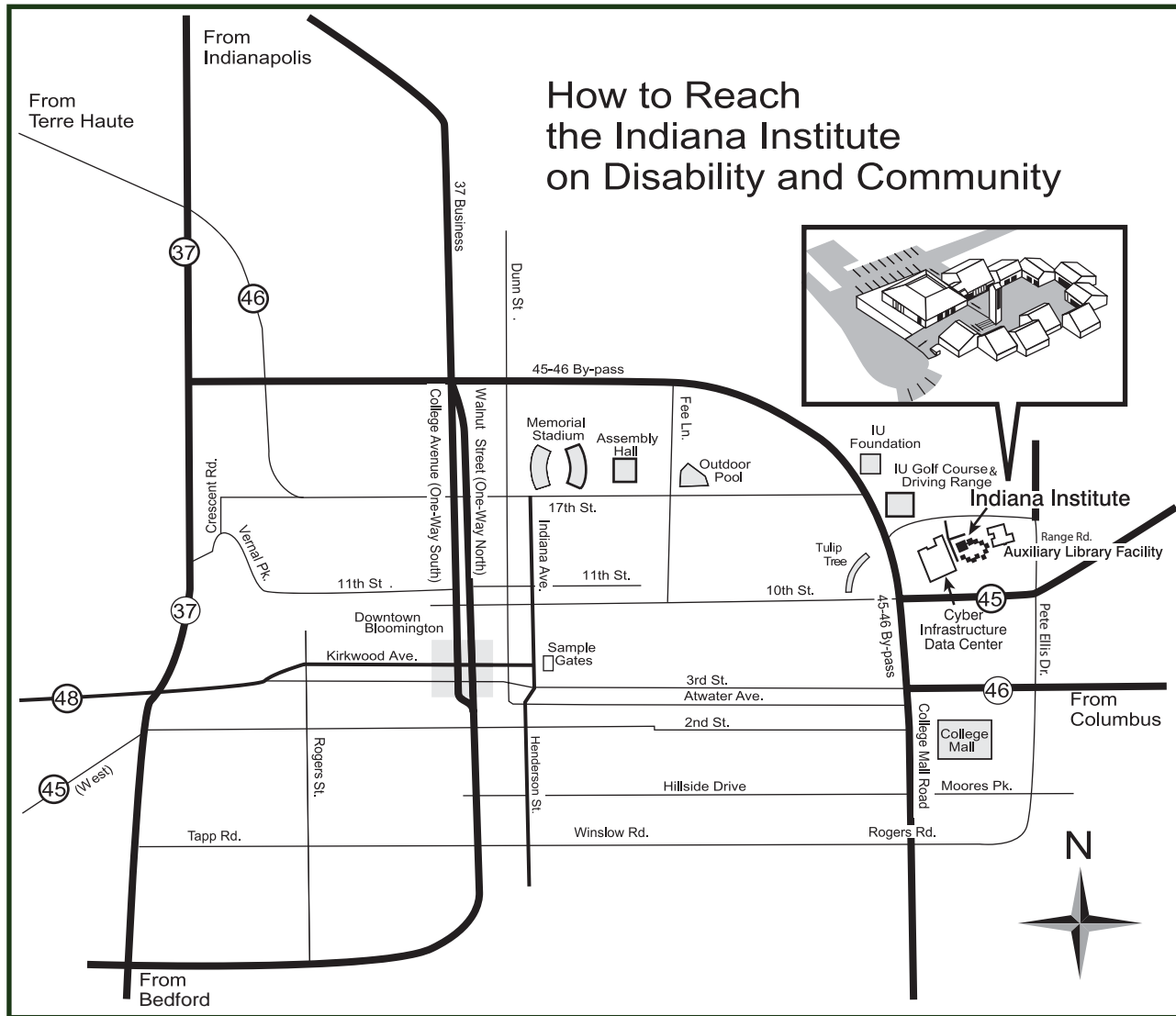
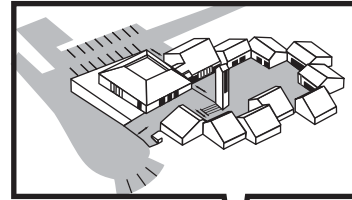


How to Reach the Indiana Institute on Disability and Community



How to Reach the Indiana Institute on Disability and Community

*Indiana's University Center for
Excellence in Developmental Disabilities*

2853 East Tenth Street
Bloomington, IN 47408-2696

Phone: (812) 855-6508

TTY: (812) 855-9396

Fax: (812) 855-9630

e-mail: iidc@indiana.edu

Web and Events Calendar:

www.iidc.indiana.edu

From the North: 37 South; take off-ramp to 45-46 By-pass; going East on 45-46, make first left past the IU Golf Course & Driving Range and before the light at 10th Street. Immediately turn left on access road. Travel past Campus Children's Center and continue to follow the access road. The Indiana Institute is to the right (brown brick complex with tower).

From the South: 37 North; take off-ramp to 45-46 By-pass. Follow directions in "From the North."

From the East: 46 West to College Mall Road. Turn right on to 45-46 By-pass heading West past the stoplight on 10th Street. Make the first right. Immediately turn left on access road. Travel past Campus Children's Center and continue to follow the access road. The Indiana Institute is to the right (brown brick complex with tower).

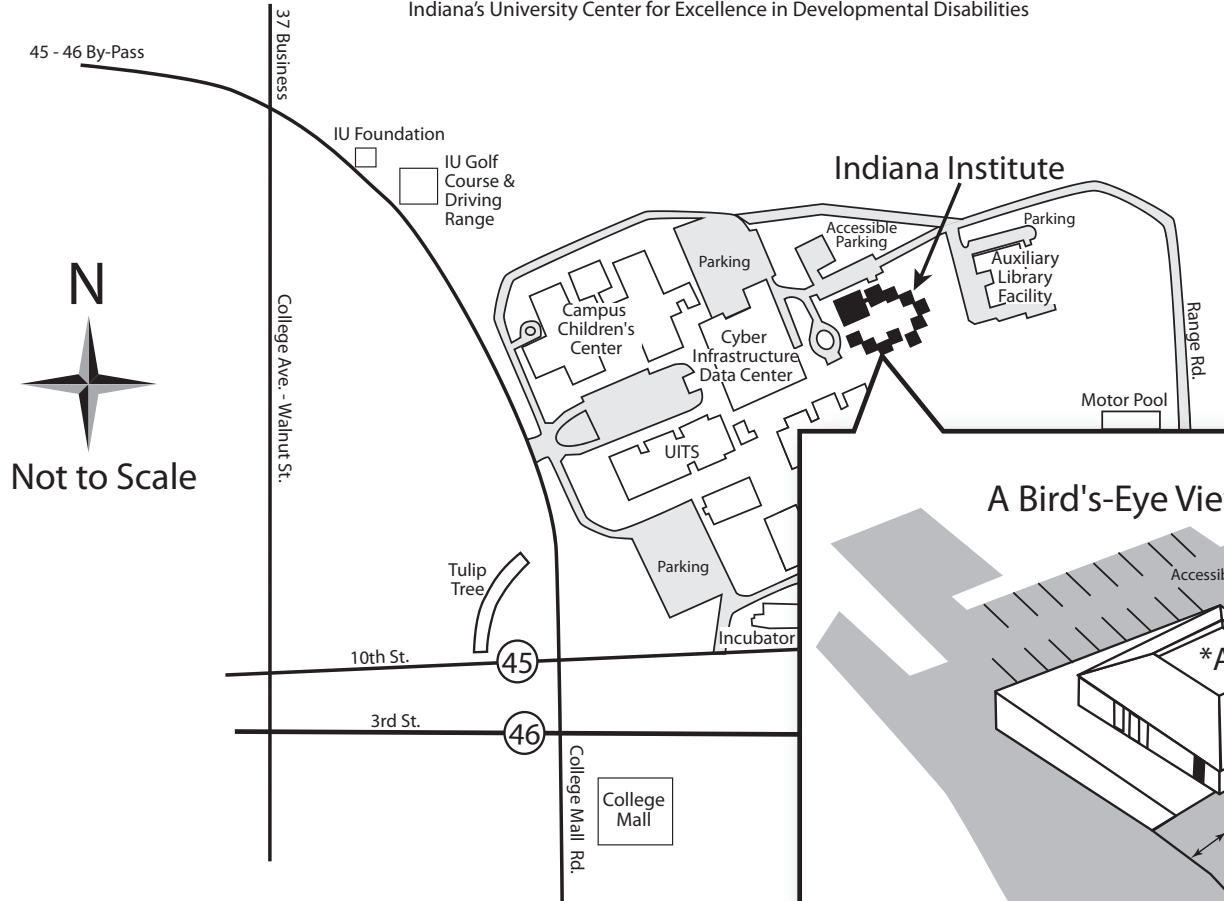
From the West: 48 East to 37 North; take off-ramp to 45-46 By-pass (East); follow directions in "From the North."

Indiana Institute on Disability and Community at Indiana University, Bloomington

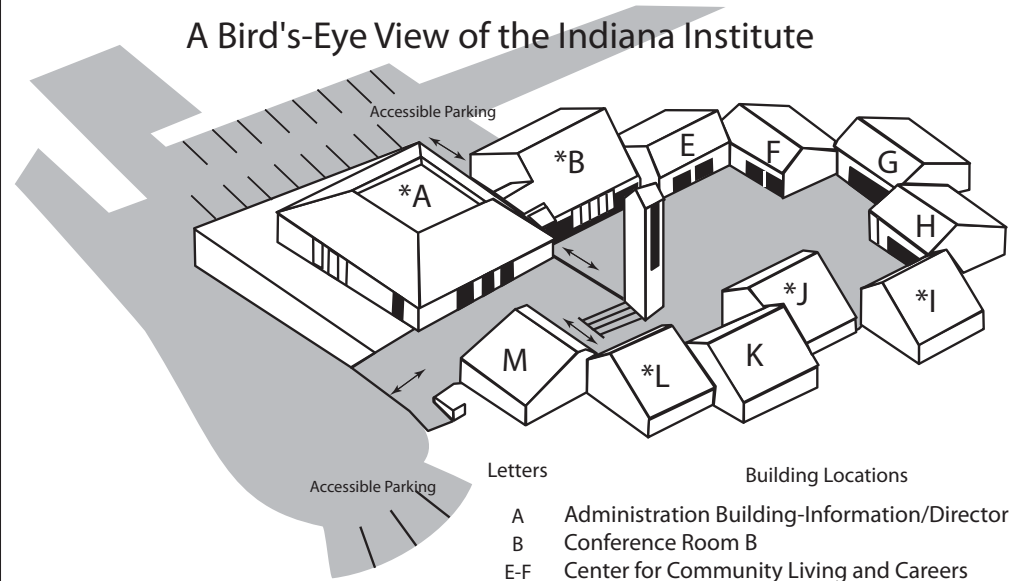
Indiana's University Center for Excellence in Developmental Disabilities



Phone: (812) 855-6508
 Fax: (812) 855-9630
 TTY: (812) 855-9396
 Web: www.iidc.indiana.edu
 e-mail: iidc@indiana.edu



A Bird's-Eye View of the Indiana Institute



Letters	Building Locations
A	Administration Building-Information/Director
B	Conference Room B
E-F	Center for Community Living and Careers
G	Center on Education and Lifelong Learning
H	Early Childhood Center
I	Center for Disability Information and Referral
J	Conference Room J
K	Indiana Resource Center for Autism
L	Center for Planning and Policy Studies
M	Center on Aging and Community
*	Accessible Restrooms
↔	Accessible Ramp

Parking Information: Visitors hanging parking permits are available from the Indiana Institute's Receptionist located in Building A. Parking permits allow parking in C designated parking spaces Only (refer to posted C parking signs) unless otherwise indicated.
Note: Parking violations will result in tickets to vehicle owners.